

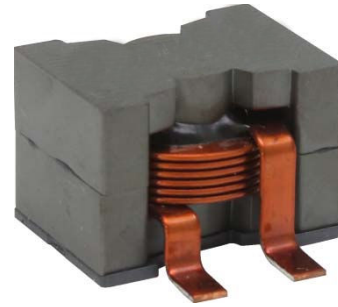
HPH26A

HIGH CURRENT POWER INDUCTOR

大电流功率电感

Features

- Susing flat wire, and SMD type.
采用扁平线，贴片类型
- Low radiation noise by magnetically shielded construction
闭合磁路封装，低辐射
- High current, Low resistance.
大电流，低电阻
- Operating temperature : -40°C~+125°C.
工作温度：-40°C~+125°C



Applications

- high efficiency DC/DC converters. 高效 DC/DC 转换器
- Single and polyphase buck converters. 单相、多相降压转换器
- Filter for audio applications. 音频滤波应用
- Optimized for high current boost applications. 大电流升压应用优化

Electrical characteristics

Part number 料号	Inductance 电感量 μH	DC resistance 直流电阻 mΩ max. (typ.)	DC saturation current 直流饱和电流 A max.(typ.)			Temperature rise current 温升电流 A max.	
			ΔL ≦ 10%	ΔL ≦ 20%	ΔL ≦ 30%	ΔT ≦ 20°C	ΔT ≦ 40°C
HPH26A-332	3.3 ± 20%	2.86(2.3)	91.0(92.7)	92.5(95.0)	93.6(96.5)	20	28
HPH26A-472	4.7 ± 20%	2.86(2.3)	59.0(62.0)	61.2(65.0)	62.4(66.4)	20	28
HPH26A-682	6.8 ± 20%	2.86(2.3)	42.0(44.5)	45.0(47.2)	45.9(47.8)	20	28
HPH26A-103	10 ± 10%	2.86(2.3)	28.0(30.5)	31.2(32.5)	32.1(34.0)	20	28
HPH26A-153	15 ± 10%	2.86(2.3)	18.0(19.7)	21.2(22.8)	21.9(23.3)	20	28
HPH26A-223	22 ± 10%	2.86(2.3)	12.0(13.6)	14.0(15.2)	15.0(15.9)	20	28
HPH26A-333	33 ± 10%	2.86(2.3)	7.0(8.3)	8.7(9.4)	9.6(10.2)	20	28

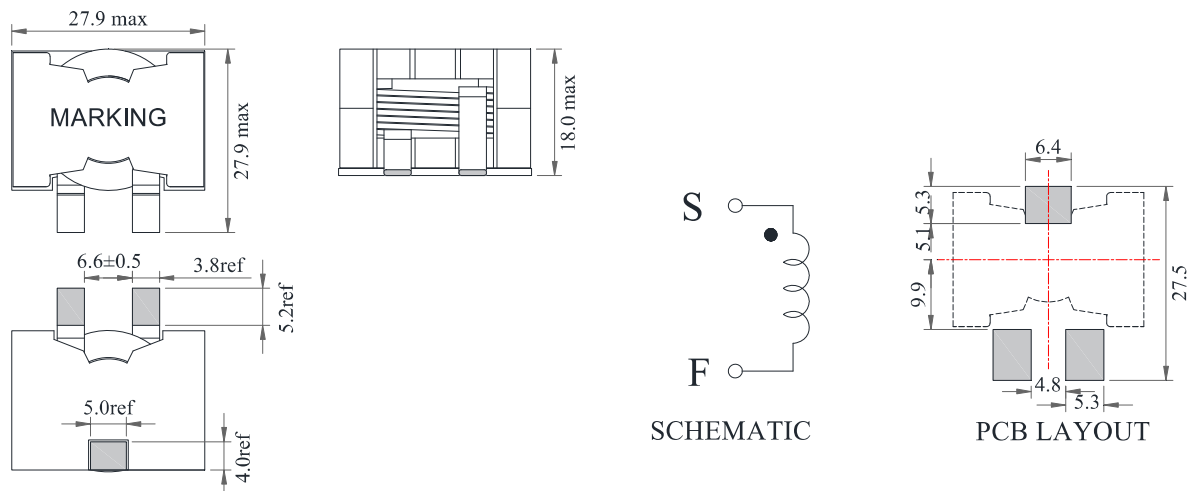
Remark

- Inductance is measured with a LCR meter 4284A or equivalent.
Test frequency at 100kHz
- DC resistance is measured with 16502 Milliohm Meter , or equivalent.
Reference ambient temperature 25°C

备注

- 电感量测试采用 4284A 数字电桥或同等仪器；
测试频率 100KHz
- 直流电阻测试采用 16502 毫欧表或同等仪器；
环境温度 25°C

Dimensions



HPH26A

HIGH CURRENT POWER INDUCTOR

大电流功率电感

Electrical Characteristic Curve

